

# Louvre Abu Dhabi Teachers Visit Guide



اللوفر أبوظبي  
LOUVRE ABU DHABI



# Content

Pre-Visit .....	06
Prepare for Your Visit .....	13
Pre-visit Activities .....	15
At the Museum .....	17
Post-Visit Activities .....	20
Feedback Form .....	23
Education Programmes .....	24
and Activities	

# Welcome to Louvre Abu Dhabi

A visit to a museum can be educational, inspiring, calming, and encouraging. Museums bring people together, expand our horizons, teach people about the world, and provide moments of peaceful reflection. Louvre Abu Dhabi's Education Programmes are based on research and knowledge sharing, focused on both the history behind the collection and creative ways of learning about art, its preservation and interpretation.

Through a series of programs and activities, we aim to deliver the best international museum education practices of today.

This handbook for teachers introduces Louvre Abu Dhabi and our exciting school programmes. It provides all the steps you need to take to make the most of your visit. It also includes pre-visit and post-visit activities that will extend the fun and learning beyond your visit to the museum.

Thank you for choosing Louvre Abu Dhabi as your learning destination where we unpack new stories, curiosities, and wonder

Let us explore together!

Education Team  
Louvre Abu Dhabi



## Pre-visit

At Louvre Abu Dhabi, you will:

- Learn about the shared influences and connections between different cultures.
- Understand the museum's narrative of universality.
- Make connections between artworks from different periods and cultures.
- Respond critically to artworks through discussions and activities.
- Connect to works of art with students' own ideas and feelings.

## Our Story

### A Unique Cross – Cultural Collaboration

Born from a unique intergovernmental agreement between Abu Dhabi and France signed in 2007, it embodies a shared spirit of openness and bold ambition for cultural progression.

Louvre Abu Dhabi opened to the public on 11 November 2017, following a formal opening ceremony attended by Sheikh Mohammed bin Zayed, Crown Prince of Abu Dhabi and Deputy Commander of the UAE Armed Forces, and French President Emmanuel Macron. The museum is a new cultural beacon, bringing different cultures together to shine fresh light on the shared stories of humanity, beyond individual civilisations, times, or places. The museum's universal narrative is told through the collection which is divided into twelve chapters. Within each chapter, you will find artworks from different cultures and civilizations connected by a common theme or story.

### A Mindful Museum

At Louvre Abu Dhabi, we are a place to share and celebrate stories of cultural connections and help you realise that we have more in common than we know.

We pride ourselves in being a Mindful Museum and have taken all precautionary measures so you can enjoy your stay with us and be as safe and comfortable as possible.

## Let's Plan Your Visit

- Step 1** Pick the guided visit (online or onsite) that best fits your students' learning needs.
- 
- Step 2** Have your information ready, number of students, preferred language, several possible dates, and times and preferred platform if online. (i.e., Microsoft Teams or Zoom Communications)
- 
- Step 3** Make your reservation by calling us at 600 565 566.  
*All school visits must be booked 72 hours prior to your online or onsite visit date.*
- 
- Step 4** Check your e-mail inbox for the booking confirmation. remember to bring your confirmation sheet with you to present it to our security team.
- 
- Step 5** Plan and share your museum visit plan and responsibilities with your designated teaching assistants. The following information will help with planning your visit.

## Chaperones

### (All accompanying adults)

Chaperones are key participants in making your students' visit to the museum as enjoyable as possible. We appreciate the time and attention chaperoning requires. The recommendation below would help you organize the number of accompanying adults for each group.

Onsite Visit	Online Engagement Sessions
All Ages: 4 adults per 25 to 30 students	All Ages: 2 adults per 25 to 30 students

## Safety

### Onsite Visit

- Ensure supervision of your students at all times.
- Guide your students using pedestrian passages and zebra crossings.
- Advise students to only walk on the tactile pavement and walk up the stairs carefully.
- Ensure appropriate dress code, and please note some of areas in the Museum could be cold.
- No external materials and tools allowed unless pre-approved by the museum education team.
- Be aware of being too close to live electricity or the water features and the concrete beach.

# Safety

## Onsite Visit

- Follow the instructions given during emergencies.
- consent from all participants.
- Masks must be always worn whilst at the museum. Please come prepared.
- The wearing of gloves is optional, but if they are not worn, hands must be washed, or hand sanitizer must be used, regularly. Hand sanitizers are available through the museum.
- Thermal scanning is in place on entry – if you show any symptoms of illness, such as a fever ( $\geq 37.3$ ), coughing or shortness of breath, regrettably we won't be able to let you into the museum.
- Social distancing measures (2m) are in place throughout the museum
- No paper resources or multimedia guides will be available at the museum. You can download the Louvre Abu Dhabi kids' app or Art Explorer's Trail game using your personal electronic device. You can access it by scanning the QR code onsite or via the app store and/or website.

Following the latest government guidelines, all visitors must be vaccinated and show a 'Green' status on the Alhosn app to enter the museum. Subject to be updated based on governmental announcements.

## Online Visit

- Ensure that your students do not join the session before the host.
- All students are to stay in the waiting room before being permitted by the host to join the session.
- For each session, identify yourself and the assigned museum educator within the session to ensure your students are aware of all adults present with them, virtually.
- Only share the link with your students and accompanying adults
- Not permitted to publicize the shared meeting link on social media or any other public domain, such as your website.
- Not permitted to share a screenshot or record the session without consent from all participants.



# Accessibility

## Onsite Visit

There are many special facilities to accommodate the diverse needs of all visitors.

Wheelchairs and strollers are available for complimentary loan during your visit, from the Loan Desk opposite the Boutique.



## Lunch Spaces

We regret that there are no dedicated lunch spaces. Students are welcome to buy lunch at the Museum Café or to have their meals prior to their visit.

# Prepare For Your Visit

## Online & Onsite Visit

### Research

We recommend the following quick research activities before your visit.

### Discuss

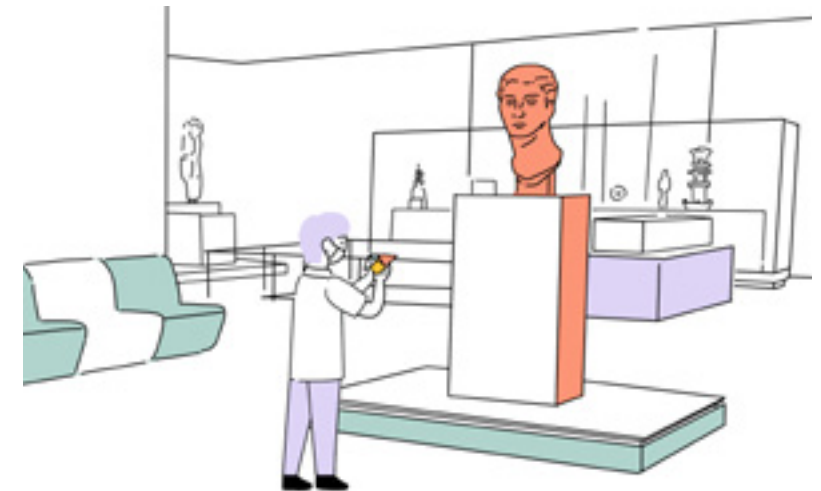
The museum's architecture and what inspired its unique design [click here](#).

### Browse

Through the section 'Our Story' on [louvreabudhabi.ae](http://louvreabudhabi.ae) to learn more about the history of the museum, its universal themes and the agreement between France and UAE, [click here](#).

### Download

Free digital and non-digital learning resources to learn more about engaging students with the museum's collection and architecture, [click here](#).



# Museum Manners

Review with your students about general museum manners and why we follow them.

## Onsite & Online Visit

Manners	Why
Leave all backpacks, food, drinks or other items at school or the bus before walking into the museum.	You can enjoy a drink or bite after your gallery visit at the Museum Café.
Admire the art with our eyes, not our hands.	The artworks and the objects displayed are precious and we would want to protect them to enjoy looking at them for a very long time.
Practice our calm voices while walking through the museum galleries.	We want to make sure that everyone enjoys their visit to the museum without disruptions.
Remind each other to stay with our groups while exploring the museum.	We would not want you to get lost.
Use pencils only for writing and drawing in the galleries – no pens or markers please.	Using ink-based materials are dangerous for the safety of our artworks and objects.
Avoid using cameras during our guided visit with the museum educator.	We want you to enjoy the visit by looking at artworks that inspire your thinking, creativity, and imagination.
Turn off our microphone, unless we want to ask a question by choosing the Raise Hand option.	Thank you for helping the museum educator by paying close attention and not disturbing the session.
Turn on video to participate. Optional	We want to make sure that you and your peers can see each other's friendly faces.
Write only educational related questions within the chat.	We would not want to miss any of your interesting questions.
Turn on video to participate. Optional	We want to make sure that you and your peers can see each other's friendly faces.
Write only educational related questions within the chat.	We would not want to miss any of your interesting questions.

# Pre-Visit Activities

## Onsite & Online Visit

### What is a Museum?

**Purpose:** To help prepare students for their guided visit by asking inquiry based, open ended questions.

#### Ask your students:

- Have you ever visited a museum before? Why do you museums exist in our community?
- What other buildings do you know that have a dome?
- What type of artworks do you think you will find at Louvre Abu Dhabi?
- What do you think a universal museum means?
- What do you like to collect? Do you have your own special collection?

## Art Critics

**Objective:** This pre-visit activity will give students the opportunity to develop their skills in analyzing an artwork.

**Purpose:** This will prepare students for their visit by developing the skills used to analyze a work of art in depth.

**Activity:** Ask students to locate a work of art in your classroom or elsewhere in the school. Guide students through the following steps of art analysis and interpretation. Feel free to verbally prompt these steps or to print them out for self-guided reflection.



## Art Critics

### Describe

List all of the things you see. Try not to think about the story or meaning behind the artwork or even whether or not you like the artwork, simply describe the work. List as many elements that you observed within the artwork as you can. Pretend you were trying to tell someone what this artwork looks like over the phone.

### Analyze

Focus on the different details represented as well as the elements of art and principles of design that the artist has used within the artwork? Line, shape, color, pattern, texture, balance, rhythm?

### Interpret

Now, let us get into the meaning of the work? What do you think this artist is trying to say through this artwork? How does the work make you feel? Is the artwork telling a story?

### Evaluate

Do you like this work of art? Do you think this artwork is unique and why?



## In The Museum

You have arrived! Follow this checklist for a smooth start:

## Onsite Visit

- Present your, your colleagues and your students (above 12 years old) green status on the Al Hosn app at the museum entrance.
- Make your way to the school group ticketing desk with our visitor services agent and show your digital confirmation order number.
- Meet the assigned Museum Educator of your school visit at the school group ticketing desk.
- Please remember, no pens, food, drinks or chewing gum inside to the museum galleries.

## Online Visit

- Ensure that you and your students join the call, 5 minutes prior to the start of the online session.
- Ensure all your students have entered the call, through the shared platform link.
- Ensure that your students listen to the guidelines presented by the Museum Educator at the beginning of the session.



\*Subject to updates based on governmental announcements.

# Games to play while waiting to start

## Online or Onsite Visit

### Describe it!

- Choose one student to step outside of the line or step away from the call while the rest of the class agrees upon an item (e.g., a palette)  
After the rest of the class has chosen their item, ask the students to return.
- He or she will ask each student, “Describe it.”
- Each student will use one descriptive word without revealing the object.
- He or she will continue to ask them until the student guesses the secret item.

### Tell-a-story!

Start an art-related story with your students by beginning with a single phrase. For instance, you can start by saying “I saw an artwork...” Your students can add a phrase to the story as you move down the line or call, alphabetically. Your story can also build their expectations before their visit.

### Make-a-Shape!

- Explain to your students that they will silently make a shape after you call out a shape.
- Call out the name of a shape, and students try to make that shape using their arms and bodies.



## Post-Visit Activities

At Louvre Abu Dhabi, you will:

- Learn about the shared influences and connections between different cultures.
- Understand the museum's narrative of universality.
- Make connections between artworks from different periods and cultures.
- Respond critically to artworks through discussions and activities.
- Connect to works of art with students' own ideas and feelings.

## Reflection Activity

The following prompts will help you and your students to reflect about your visit to the museum.

### Know

List 3 things that you already knew and confirmed during your museum visit:

---

---

---

### Want to Know

List 3 questions that you still have and will investigate:

---

---

---

### Learn

List 3 things that you learned during your visit to Louvre Abu Dhabi:

---

---

---

# Art Search

## Directions

Find and circle the following words in the grid. Look for them in all directions including backwards and diagonally.



Artifact, Colour, Cubism, Dome, Impressionism, Monet, Painting, Picasso, Rodin, Saadiyat, Sculpture, Shape, Surrealism, Texture, Universal, Weaving  
Artifact, Cubism, Dome, Impressionism, Monet, Painting, Picasso, Rodin, Saadiyat, Sculpture, Shape, Surrealism, Texture, Universal, Weaving

# Feedback Survey

Your feedback is valuable to us, please fill out the survey via the link shared below to help us better understand your and your students' educational needs in the future. [Click here.](#)

## Children's Museum

Emotions! The new art adventure

Until May 2023

Welcoming families and young children back to the Children's Museum to discover the secret world of feelings in artworks. It's free for children, and perfect for families especially with younger children aged 4-10.

[Click here](#) for more information.

## Exhibitions

Book a guided online or onsite visit for the following international exhibitions.

### Dragon and Phoenix: Centuries of exchange between Chinese and Islamic worlds

With Musée national des arts asiatiques – Guimet, Paris  
6 October – 12 February 2022

[Click here](#) for more information.

### Versailles & the World

With Château De Versailles

26 January – 4 June 2022

# Education Programmes and Activities

Guided online and onsite visits.

Onsite Visit	Online Engagement Sessions
AED 280 (group of up to 25 students)	AED 375 (group of up to 25 students)
<b>Duration:</b> 45 minutes <b>Time slots:</b> 10:00, 11:00, 12:00, 16:00, daily except Monday & Weekends VAT not included	<b>Duration:</b> 60 minutes <b>Time slots:</b> 9:30, 10:30, 11:30, 16:00, daily except Monday & Weekends VAT not included

Quoted fee includes entrance ticket for 25 students and accompanying adults. Please note that based on the current government guidelines, groups are to be divided in 10 students per museum educator.

Cycle One KG/Grades 1-4	Cycle Two Grades 5-8	Cycle Three Grades 9-12
Animals in Art	Islamic Art	Islamic Art
Balance and Movement	Nature in Architecture	Architecture
Treasured Gold	Treasured Gold	Treasured Gold
Express your Emotions (CM)	Innovations in Travel	Innovations in Travel
UAE Inspired: Year of the 50th	UAE Inspired: Year of the 50th	UAE Inspired: Year of the 50th
Take me to Asia II Dragon and Phoenix	Take me to Asia	Take me to Asia
	Take me to Asia II Dragon and Phoenix	

## Cycle One KG/Grades 1-4

### Animals in Art

**Themes:** Depiction of animals in art

**Age Range:** KG, Grade 1 to Grades 4

**Description:** What is the importance of animals in art? Students explore the representation of animals in art, and how since the Stone Age, people decorated caves with paintings or engravings of animals, to our present-day artists who depict them in their works.

**Subject Links:** Visual Literacy, Arabic, Science, and Social Studies

### Balance and Movement

**Themes:** Art & Physical movement

**Age Range:** KG, Grade 1 to Grades 4, People of Determination

**Description:** How artists represent movement in art, and why? Students explore movement and balance in art through looking carefully at artworks from the museum's collection. Students create a sequence of movements and moments of stillness to understand the relation between movement, balance and emotions. Ideal for People of Determination.

**Subject Links:** Physical and Health Education, Art and Crafts.

\*based on MOE and ESE objective, we are aligning with empowering young Emirati students to take ownership of their physical education, health and wellbeing.

### Treasured Gold

**Themes:** Gold as a colour, as a symbol, gold as a material and a currency

**Age Range:** KG, Grade 1 to Grades 4

**Description:** Why have humans always treasured gold?

As the UAE celebrates the year of the 50th, the golden jubilee, students discover why gold has been used through time to celebrate achievements, show power, devotion, and success through discussion and artwork analysis.

**Subject Links:** Social Studies, History and Identity, Art

## Express Your Emotions

**Themes:** Colour and Expression

**Age Range:** KG, Grade 1 to Grades 4

**Description:** How are feelings expressed in art?

Students discuss how artists make art to communicate and express feelings and explore how different elements of art such as line, gesture, and colour show emotions.

**Subject Links:** English, Arabic, Art, Health and Well Being.

## UAE Inspired: Year of the 50th

**Themes:** Reinforcing UAE national identity through the museum collection

**Age Range:** KG - Grade 1 to Grades 4

**Description:** How can the museum collection reinforce national UAE identity? As the UAE celebrates the 50th golden jubilee, students learn about Emirati cultural heritage through discovering objects found across the UAE.

**Subject Links:** Social Studies, Science, Identity.

## Take me to Asia II

### Linked to Dragon and Phoenix Exhibition

**Themes:** Depiction of animals in art

**Age Range:** KG, Grade 1 to Grades 4

**Description:** How do we tell stories through art?

Students unravel the mysteries of how stories of Dragons and Phoenixes evolved into representation in art.

**Subject Links:** Visual Literacy, Arabic, Science, Art and Social Studies

## Cycle Two Grades 5-8

### Islamic Art

**Themes:** Islamic art motifs

**Age Range:** Grade 3 to Grade 8

**Description:** What are the main decorations found in Islamic art objects?

Students discover Islamic art's distinctive decorative motifs found in art objects and architecture.

**Subject Links:** Islamic Studies, Arabic language, Arts, History, Geography, Social Studies and Mathematics

### Innovations for Travel

**Themes:** Caravels, maps

**Age Range:** Grade 5 to Grade 8

**Description:** What innovations led to the discovery of new lands? Find out how the development of sciences and new technologies helped Explorers discover unknown lands.

**Subject Links:** Mathematics, Science, Geography, Social Studies, History

### Treasured Gold

**Themes:** Gold as a colour, as a symbol, gold as a material and a currency

**Age Range:** Grade 5 to Grade 8

**Description:** Why have humans always treasured gold? As the UAE celebrates the 50th golden jubilee, students discover how humans have used gold through history in all forms of art, from a symbol of eternity, devotion and power, to celebration and recognition.

**Subject Links:** Social Studies, History and Geography, Science, Identity.

## Nature in Architecture

**Themes:** Design and geometric shapes

**Age Range:** Grade 5 to Grade 8

**Description:** What natural elements influenced Jean Nouvel in the design of Louvre Abu Dhabi?

Students discover the connection between UAE's surrounding natural elements and what inspired Louvre Abu Dhabi's architectural design.

**Subject Links:** Social Studies, Arabic Language, Science, Identity, Environment.

## Take me to Asia

**Themes:** Cultural exchanges and influences

**Age Range:** Grade 5 to Grade 8

**Description:** How do the stories of art guide communities in Asia?

Students discover how cultural exchanges of ideas and art making across communities in Asia influenced artistic production and ways of living.

## Take me to Asia II Linked to Dragon and Phoenix Exhibition

**Themes:** Cultural exchanges and influences

**Age Range:** Grade 5 to Grade 8

**Description:** How do the stories of art guide communities in Asia?

Students unravel the mysteries of how stories of Dragons and Phoenixes evolved into symbols of power across the continent.

**Subject Links:** Social Studies, Art History and Geography, Literature, Creative writing, Visual literacy.

## UAE Inspired – Year of the 50th

**Themes:** Reinforcing UAE national identity through the museum collection

**Age Range:** Grade 5 to Grade 8

**Description:** How can the museum collection reinforce national UAE identity? As the UAE celebrates the year of the 50th, students learn about Emirati cultural heritage through discovering objects found across the UAE.

**Subject Links:** Social Studies, Science, Identity.

## Cycle Three Grades 9-12

### Islamic Art

**Themes:** Islamic art across time and space

**Age Range:** Grade 9 to Grade 12

**Description:** What makes Islamic art different from other types of art? Students discover the diversity and richness of the Islamic world's artistic production across time and space.

**Subject Links:** Islamic Studies, Art, History, Geography, Social Studies, Mathematics, and Chemistry, Identity.

### Innovations for Travel

**Themes:** Caravels, maps, explores

**Age Range:** Grade 9 to Grade 12

**Description:** What innovations led to the discovery of unknown lands? Find out how the development of sciences and new technologies helped explorers discover unknown lands. Unearth how this experience led to people's fascination with collecting and displaying objects.

**Subject Links:** Mathematics, Science, Geography and Technology

### Architecture

**Themes:** Discover Louvre Abu Dhabi

**Age Range:** Grade 9 to Grade 12

**Description:** How has UAE culture influenced the architecture of Louvre Abu Dhabi? Students discover the connection between UAE's surrounding natural elements and what inspired the architect to design the museum's building, from the dome to its unique structure.

**Subject Links:** Mathematics, Geometry and Social Studies

## Take me to Asia

**Themes:** Cultural exchanges and influences

**Age Range:** Grade 9 to Grade 12

**Description:** How do the stories of art guide communities in Asia? Students discover how cultural exchanges of ideas and art making across communities in Asia influenced artistic production and ways of living.

## Take me to Asia II

### Linked to Dragon and Phoenix exhibition

**Themes:** Cultural exchanges and influences

**Age Range:** Grade 9 to Grade 12

**Description:** How do the stories of art guide communities in Asia? Students unravel the mysteries of how stories of Dragons and Phoenixes evolved into symbols of power across the continent.

**Subject Links:** Social Studies, Art History and Geography, Literature, Creative writing, Visual Literacy.

## UAE Inspired – Year of the 50th

**Themes:** Reenforcing UAE national identity through the museum collection

**Age Range:** Grade 9 to Grade 12

**Description:** How can the museum collection reinforce national UAE identity? As the UAE celebrates the year of the 50th, student's learn about Emirati cultural heritage through discovering objects found across the UAE.

**Subject Links:** Social Studies, Science, Identity.



[louvreabudhabi.ae](http://louvreabudhabi.ae)

#### Opening hours

Monday: Closed

Tuesday: 10 – 18.30

Wednesday: 10 – 18.30

Thursday: 10 – 18.30

Friday: 10 – 18.30

Saturday: 10 – 18.30

Sunday: 10 – 18.30

Last admission is at 18.00

Email us

[education@](mailto:education@louvreabudhabi.ae)

[louvreabudhabi.ae](http://louvreabudhabi.ae)

Call us

+971 600 56 55 66